

28mm, GM28Y Series Brushless DC Motors

● General Specification

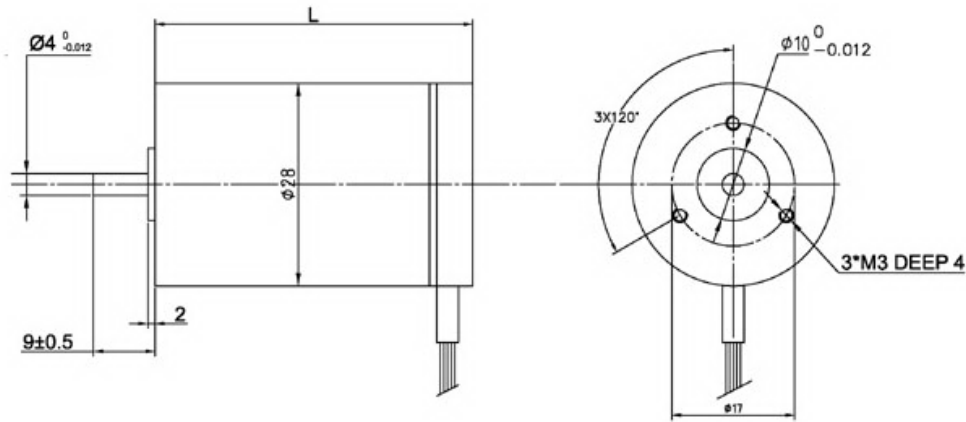
Item	Specifications
Winding type	WYE
Hall effect angle	120 degree electrical angle
Shaft run out	0.025mm
Radial play	0.02mm@450g
End play	0.08mm@450g
Max. radial force	15N @ 10mm from the flange
Max. axial force	10N
Insulation class	Class B
Dielectric strength	500VDC for one minute
Insulation resistance	100MΩMin., 500VDC



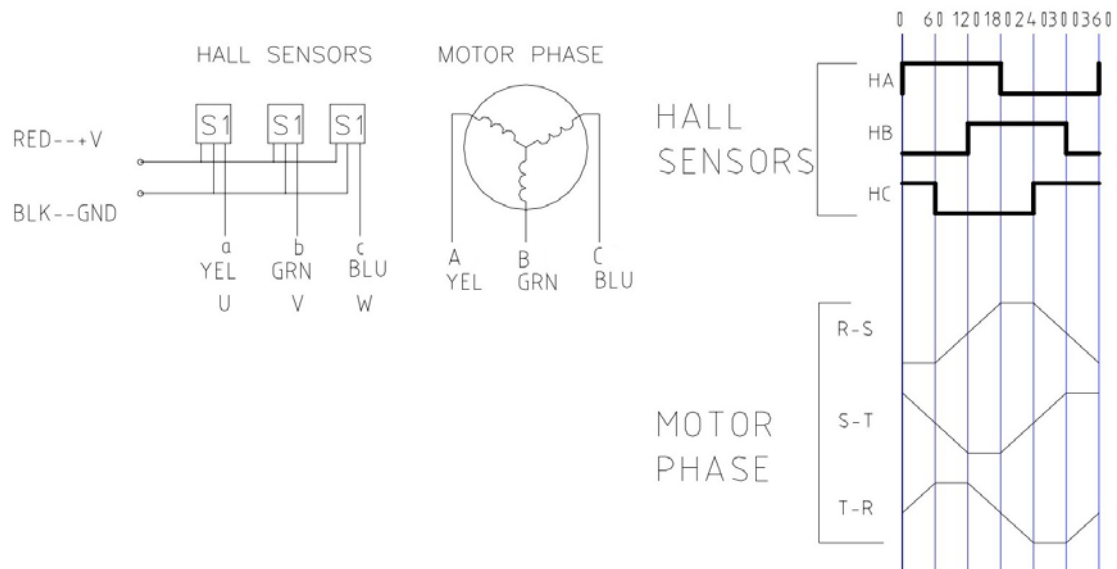
● Technique Specifications

Model		GM28Y-26A80	GM28Y-38A200
Number of poles		4	
Number of phase		3	
Rated voltage	VDC	15	24
Rated speed	RPM	8000	20000
Continuous stall torque	Oz-in / mN.m	1.2 / 8.4	2 / 14.16
Rated torque	Oz-in / mN.m	1 / 7	1.7 / 11.8
Rated power	W	6	25
Peak torque	Oz-in/mN.m	3 / 21	5 / 35.4
Peak current	A	2.5	4.06
Torque constant	Oz-in/A	2	1.3
	Nm/A	0.014	0.009
Back E.M.F	V/KRPM	1.5	0.92
Rotor inertia	g.c m²	1.23	2.12
Body length	mm	26	38
Voltage range	VDC	12~36	
Speed Range	rpm	4000~24000	
Weight	Kg	0.06	0.08

- Dimensions (mm)



- Wiring Diagram



- Custom Motor Options

Custom housing to meet your dimensional requirements

Custom shaft options: extended, slotted, cross drilled, hollow shaft etc

Custom winding to meet your specific application needs

Lead wire options: special lengths, heat shrink, Teflon leads, pins, connectors, cable harnesses etc

Bearing & lubricant options for high temperature/humid operations

Encoders, gearboxes, sprockets and pulleys installation